

## Unmatched Connectivity, Unwavering Performance

### Introducing the Next-Gen Cellular Modules for Smart Metering

CyanConnode's advanced Cellular Modules ensure superior communication reliability and service-level performance, designed to keep your smart metering infrastructure always connected with industry-leading 99.9% uptime.

#### Why Choose Our Cellular Modules?

##### Always Connected

Active connection at all times, enhancing data reliability

##### Superior SLA Performance

Optimized for 99.9% uptime, ensuring seamless data transmission

##### Adaptive Connectivity

Supports LTE 4G/ NBIoT with fallback options to 2G for uninterrupted service. Additionally supported by BLE

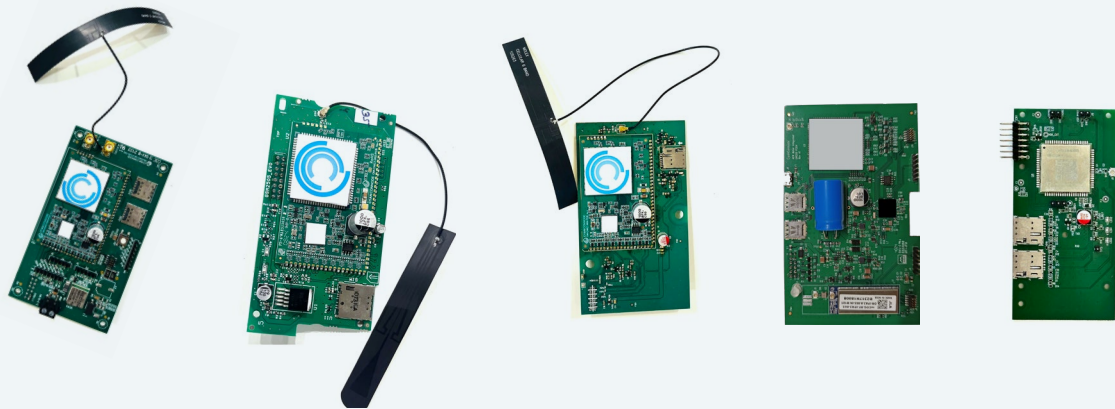
##### Secure & Smart

End-to-end multi-layered security, integrated two-way communication and scheduled push to Head-End Systems for optimized data flow

##### Future-Ready

Remote firmware updates (FOTA), auto RTC synchronization, command prioritization, and intelligent data storage ensure seamless upgrades and operations

#### Our Cellular Variants



##### Hardware variants

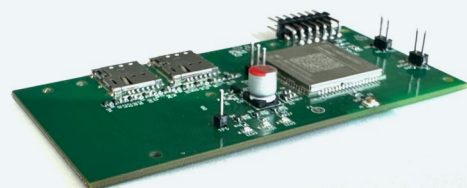
- 4G
- 4G Fallback to 2G
- 4G plus BLE
- 4G Fallback to 2G plus BLE
- NBIoT
- NBIoT plus 2G Fallback
- NBIoT plus BLE
- NBIoT plus 2G Fallback plus BLE

##### Functional Variants

- Transparent
- Intelligent
- Omnimesh (In-meter Gateway)
- Omnimesh CNIC

##### Connectivity

- Single SIM
- Dual SIM
- eSIM



**Customers can select the optimal variant based on geography, cost, functionality, network availability, scalability, security, and future expansion needs.**

# Technical Specifications

Category	Specification
Firmware Updates	OTA
Frequency Bands	LTE – FDD B1/B3/B5/B8 LTE – TDD B34/B38/B39/B40/B41 BT: 2.4GHz
Data Throughput	LTE – FDD (Mbps) 12(UL) / 10(DL) LTE – TDD (Mbps) 6(UL) / 9(DL)
Network Protocols	TCP/UDP/PPP/NTP/NITZ/FTP/HTTPS/PING/CMUX/FTPS/SSL/FILE
Meter Interface	Meter UART (TTL)
Metering Comms Protocol	DLMS: HDLC, WPDU
Reading Protocols	Transparent / Intelligent Push / Omnimesh
SIM Compatibility	Single / Dual / e-SIM
LED Indicators	Network Status and Device Communication status
Antenna Specs	Ceramic PCB mounted/ Flexible PCB
Temperature Rating	-35°C to +75°C
Humidity	Up to 95% Non-Condensing
Environmental Protections	Silicon-based Conformal Coating
Power Consumption	As per IS16444 (<7W)
Auxiliary Power	Supercapacitor to support last gasp messages

Upgrade your smart metering infrastructure with CyanConnode's cutting-edge Cellular Modules – ensuring seamless communication, enhanced performance, and an always-on connection.

Contact us for a Demo:  
✉ [sales@cyanconnode.com](mailto:sales@cyanconnode.com)

For more information visit  
🌐 [www.cyanconnode.com](http://www.cyanconnode.com)

Or scan  
QR code

